

New England HOME

CT

Celebrating Fine Design, Architecture, and Building

*SUMMER
IN
STYLE*

Light + Bright, Inside + Out

Summer 2020

\$6.95 US / CAN



Display until October 19, 2020
nehomemag.com



Design collaborations between makers, artisans, and manufacturers are more popular than ever.

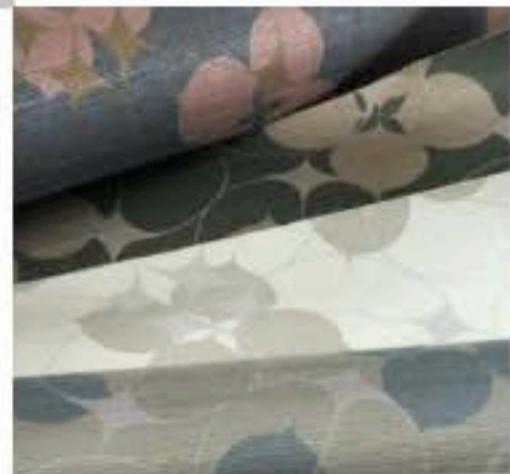
Editor at Large **Clinton Smith** shares the scoop on one perfect partnership.

Discover more inspiration on Instagram at @nehomemag and @mrclintsmith.



AT THE ART OF THE MATTER

What happens when a celebrated textile and product designer teams up with an artist well-known for her high-contrast creations? A dynamic line of wall coverings and fabrics that lure and dazzle the eye. Lori Weitzner of Weitzner Limited and artist Lisa Hunt first met at an interior design networking event, and as Weitzner was developing the Reverie collection of fabrics and wallpapers, she knew Hunt would be an ideal collaborator to create a number of the one-of-a-kind designs. The visual repetition of Hunt's graphic work, as well as her use of metallic (particularly gold) finishes, was totally in sync with Weitzner's penchant for creating timeless designs with varying juxtapositions—whether it's through color, pattern, or texture. To hear more about this debut from the designers themselves, click on Design Dialogue at nehomemag.com for my video interview with the duo. weitznerlimited.com, lisahuntcreative.com



CLOCKWISE FROM TOP CENTER: Lisa Hunt and Lori Weitzner. The Reverie collection is defined by its expressive motifs and includes wallpaper designs such as Olympia. Other patterns include Hourglass, Lightray, and Dorado.